

INTELLIGENCE IN EVERY APPLICATION



BLACKLINE **Q**



BLACKLINE

SIGNATURE SOUND FOR PORTABLE AND INSTALLATION APPLICATIONS

For over 25 years, Martin Audio's Blackline Series has set the global benchmark for affordable professional loudspeakers—renowned for their exceptional sound quality and reliability.

BlacklineQ is a reimagining of this iconic series delivering improved passive two-way point source loudspeakers, all-new column speakers and a suite of subwoofers. The entire series features intelligent design details, making it equally at home in portable or install applications.



APPLICATIONS

- Portable sound reinforcement for live sound, theatre, DJs and corporate events
- Unobtrusive stage monitoring
- Ideal for permanent installation in clubs, hospitality venues, conference rooms and houses of worship



LIVE SOUND



THEATRE



MOBILE DJ



CORPORATE AV



HOUSES OF WORSHIP



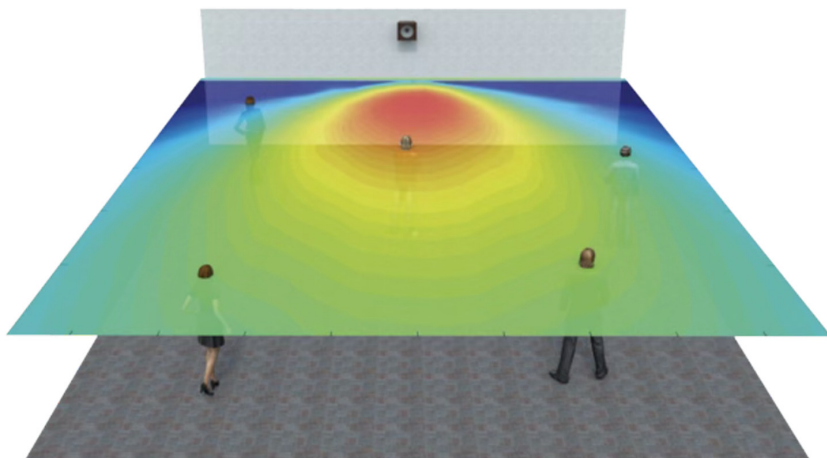
BAR CHAINS



COVERAGE, CONSISTENCY AND CONTROL

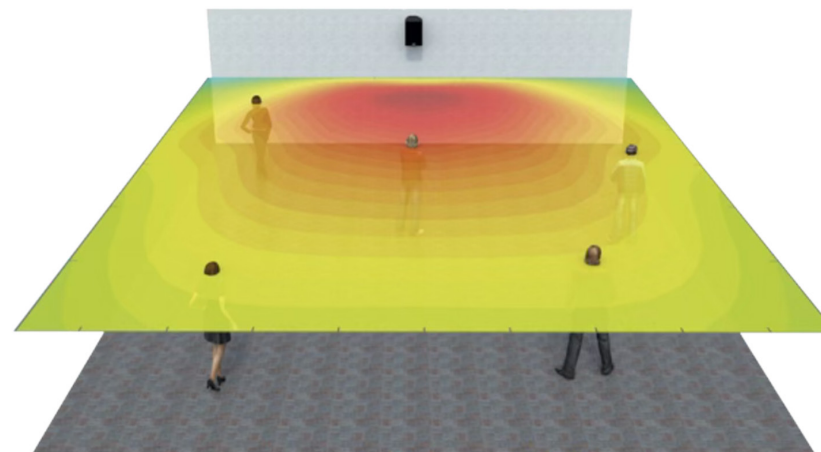
Like everything we do, BlacklineQ extolls the virtue of meticulous driver design to deliver improved coverage, consistency and control. For the first time in its class, both full-range two-way point source systems and column speakers feature Differential Dispersion technology, which enable wider, more consistent coverage with less energy directed to the ceiling.

Conventional 2-way loudspeaker coverage

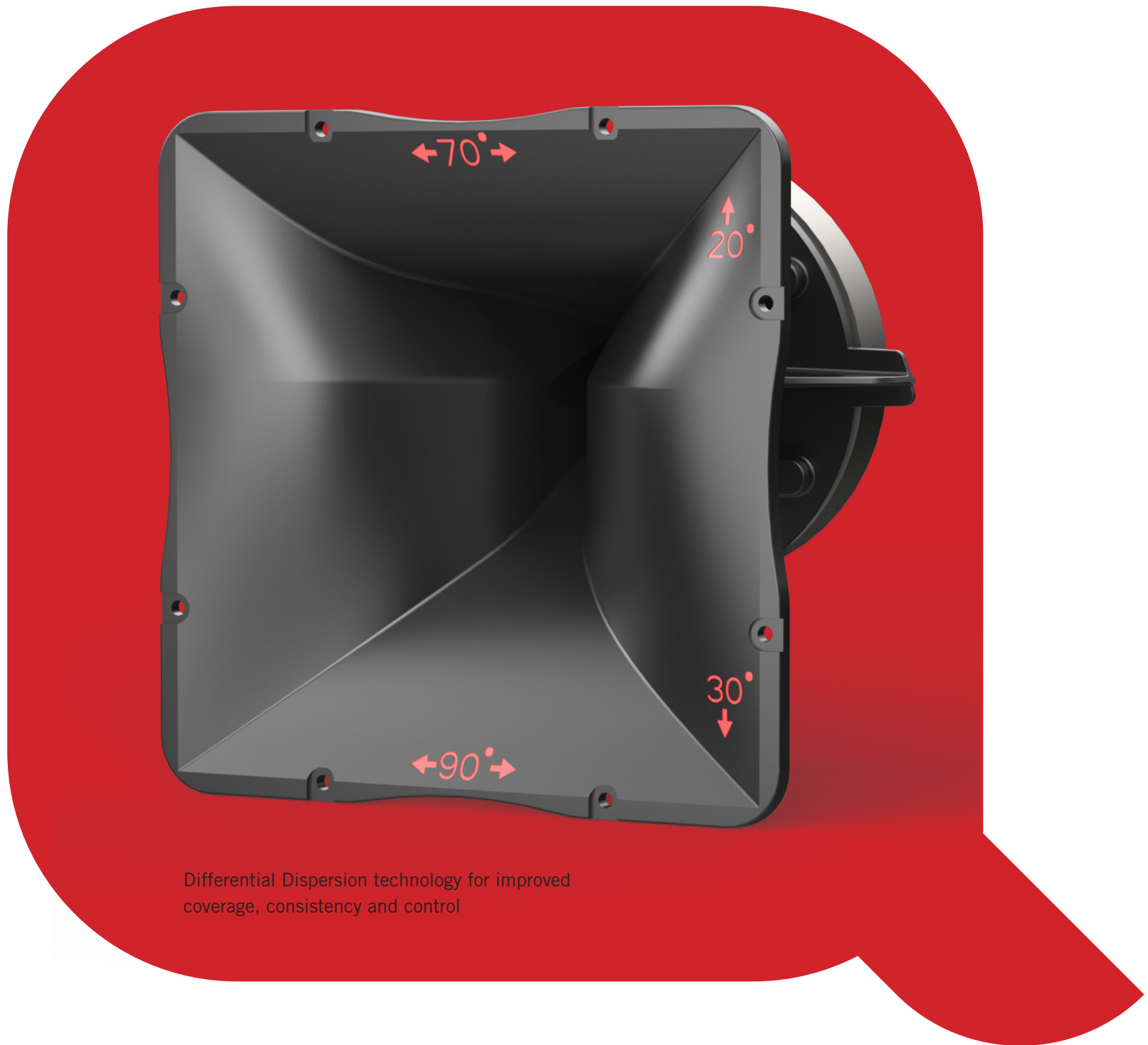


Hot spot directly in front, with weaker coverage further out and to the sides. To compensate, additional loudspeakers with overlapping coverage may be required.

BlacklineQ Differential Dispersion pattern



Rectangular, consistent coverage pattern that is highly efficient for install and live sound applications. It also reduces energy directed to the ceiling.



Differential Dispersion technology for improved coverage, consistency and control

FULL RANGE POINT SOURCE LOUDSPEAKERS

Each symmetrical, multi-angle full-range passive enclosure features a rotatable Differential Dispersion horn for horizontal or vertical deployment. A cloth-backed, screw-tight steel grille provides both protection and access to the drivers, while the larger speakers feature ergonomic handles finished in recycled ABS plastic. These provide convenient mobility while maintaining clean lines.

Q8



LF: 8"
HF: 1" exit
Peak SPL: 121dB
Dispersion: 90°–110° horizontal
× 50° vertical
Weight: 22.3lbs / 10.1kg

Applications

- Fill and spot coverage
- Under balcony fill
- Distributed systems
- Immersive sound spaces
- Portable corporate AV events
- Discreet stage monitor

Q10

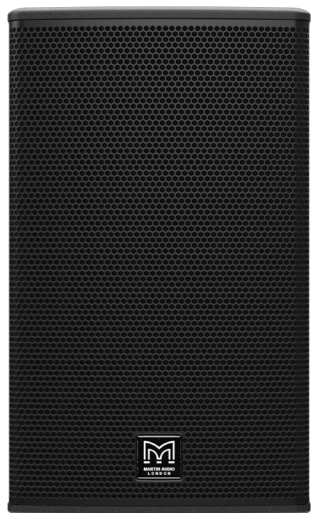


LF: 10"
HF: 1" exit
Peak SPL: 125dB
Dispersion: 90°–110° horizontal
× 50° vertical
Weight: 33.7lbs / 15.3kg

Applications

- Portable live sound reinforcement
- Theatre sound
- Fixed installations
- DJ and corporate AV events
- Stage monitoring
- Immersive sound spaces

Q12



LF: 12"
HF: 1" exit
Peak SPL: 127dB
Dispersion: 90°–110° horizontal
× 50° vertical
Weight: 40.6lbs / 18.4kg



Applications

- Portable live sound reinforcement
- Theatre sound
- Fixed installations
- DJ and corporate AV events
- Stage monitoring
- Immersive sound spaces

Q15



LF: 15"
HF: 1.4" exit
Peak SPL: 133dB
Dispersion: 70°– 90° horizontal
× 50° vertical
Weight: 74.6lbs / 33.8kg



Applications

- Portable live sound reinforcement
- Theatre sound
- Fixed installations
- DJ and corporate AV events
- Stage monitoring
- Immersive sound spaces

TWO-WAY COLUMN SPEAKERS

BlacklineQ marks Martin Audio's debut in column speaker design with the two-way passive Q44 and Q26 offering elegant, discreet solutions for both portable and fixed use.

Finished with hard wearing black or white paint, each plywood enclosure features Differential Dispersion technology for consistent coverage and intelligibility, suited to both voice reinforcement and refined musicality.

As with the point source loudspeakers, transit covers and comprehensive mounting options—including wall brackets, yokes, eyebolt suspension, and pole mounts— support flexibility of deployment. A pole-mount cover provides a clean, streamlined appearance when the mount is not in use.



Q44



LF: 4 x 4"
HF: 1" exit
Peak SPL: 119dB
Dispersion: 100°–120° horizontal
× 35° vertical
Weight: 16.5lbs / 7.5kg

Applications

- Worship
- Corporate AV events
- Auditoria
- Hospitality and retail
- Portable live sound reinforcement

Q26



LF: 2 x 6.5"
HF: 1" exit
Peak SPL: 125dB
Dispersion: 100°–120° horizontal
 × 35° vertical
Weight: 2lbs / 9.5kg

Applications

- Worship
- Corporate AV events
- Auditoria
- Hospitality and retail
- Portable live sound reinforcement



SUBWOOFERS

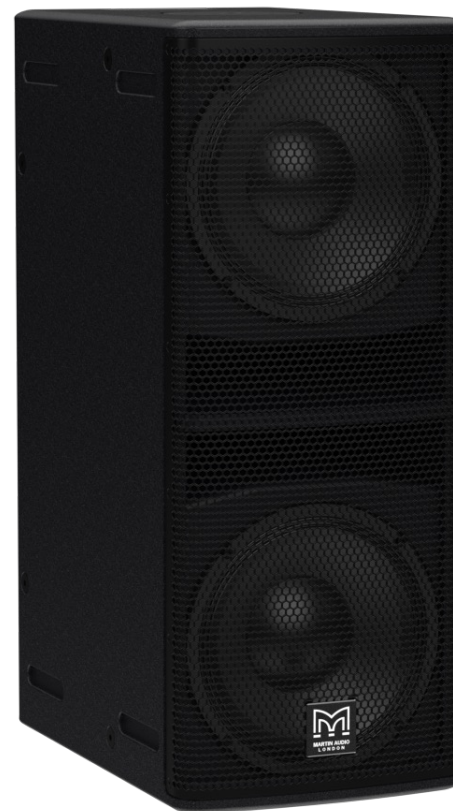
BlacklineQ includes a trio of passive subwoofers extending low-frequency performance across the series.

The enclosures are constructed from durable plywood and feature slot ports for efficiency in design while reducing noise turbulence. Each enclosure includes an M20 35mm (1.4") pole-mount fitting for seamless integration with all loudspeakers in the series. In addition, the link out socket is positioned at the top of the cabinet, providing a convenient and discreet solution for connecting the cable for a BlacklineQ loudspeaker on a pole.

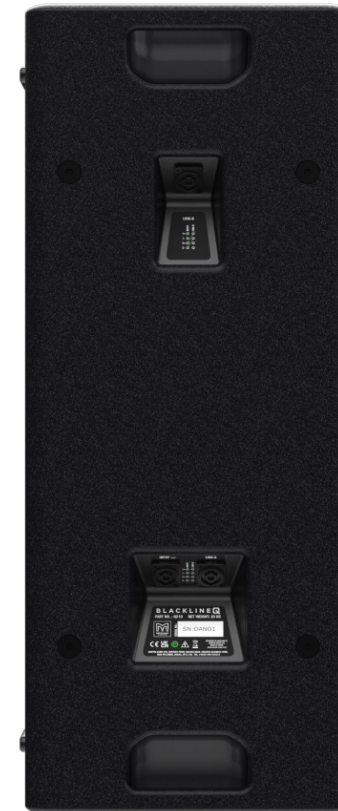
Finished in hard wearing black paint as standard, the Q210 is also available in white to match the white BlacklineQ column loudspeakers.



Q210



Driver: 2 x 10"
Peak SPL: 124dB
Dispersion: Omnidirectional
Weight: 49lbs / 22.4kg



Available in Black or White (in support of columns)

Q118



Driver 18"
Peak SPL: 130dB
Dispersion: Omnidirectional
Weight: 99lbs / 45.5kg

Q218



Driver: 2 x 18"
Peak SPL: 136dB
Dispersion: Omnidirectional
Weight: 182lbs / 82.5kg



ELECTRONICS AND SOFTWARE

For ultimate flexibility, BlacklineQ is supported by:

- iKON, VIA, and sister brand Linea Research amplifiers
- DX4.0, DX0.4 and DX0.6 controllers
- DISPLAY 3 Prediction



THAT LITTLE BIT KINDER

As part of our ongoing environmental initiatives, BlacklineQ features:

- Recycled ABS plastics – reducing carbon emissions per kilogram of material by up to 90%
- Recycled cardboard only packaging – no foam inserts
- Biodegradable tape for outer carton



Q8

TYPE	Ultra-compact, passive two-way loudspeaker
FREQUENCY RESPONSE [1]	67 Hz – 17 kHz \pm 3 dB, -10 db @ 51 Hz
DRIVER (LF)	8" (200 mm) with 4" (100 mm) voice coil, ferrite motor system
DRIVER (HF)	1" (25 mm) exit compression driver with 1" (25 mm) voice coil, PETP dome
RATED POWER [2]	200 W AES, 800 W peak
REQUIRED ELECTRONICS	Processor and amplifier, or a combined amplifier-processor unit
RECOMMENDED ELECTRONICS	DX0.4, DX0.6 or DX4.0 system processor and VIA amplifier, or iKON amplifier-processor
SENSITIVITY [3]	92 dB
MAXIMUM SPL [3]	115 dB continuous, 121 dB peak, 127 dB peak with crest factor 4
NOMINAL IMPEDANCE	8 ohm
DISPERSION	Dispersion: 90°–110° (horizontal) \times 50° (vertical)
	User-rotatable Differential Dispersion horn
CROSSOVER	3 kHz passive
ENCLOSURE	Symmetrical multi-angle plywood
FINISH	Black textured paint
PROTECTIVE GRILLE	Black perforated steel grille with scrim cloth backing
CONNECTORS	2 x NL4 connectors
PIN CONNECTIONS (INPUT)	1+/1–
PIN CONNECTIONS (LINK)	1+/1– to 1+/1–
FITTINGS	15 x M8 inserts, 6 x M6 inserts for wall bracket
	1 x pocket handle made from recycled ABS
	Pole-mount socket with removable cover
DIMENSIONS	(W) 236 mm x (H) 500 mm x (D) 250 mm
	(W) 9.3 in x (H) 19.7 in x (D) 9.8 in
WEIGHT	10.1 kg (22.3 lbs)
ACCESSORIES (OPTIONAL)	Wall bracket WB6/8
	M8 eye bolt HTKCT05, yoke, transit cover

Q10

TYPE	Compact, passive two-way loudspeaker
FREQUENCY RESPONSE [1]	63 Hz – 17 kHz \pm 3 dB, -10 db @ 41 Hz
DRIVER (LF)	10" (250 mm) with 2.5" (63 mm) voice coil, ferrite motor system
DRIVER (HF)	1" (25 mm) exit compression driver with 1.4" (36 mm) voice coil, polyimide dome
RATED POWER [2]	250 W AES, 1000 W peak
REQUIRED ELECTRONICS	Processor and amplifier, or a combined amplifier-processor unit
RECOMMENDED ELECTRONICS	DX0.4, DX0.6 or DX4.0 system processor and VIA amplifier, or iKON amplifier-processor
SENSITIVITY [3]	95 dB
MAXIMUM SPL [3]	119 dB continuous, 125 dB peak, 131 dB peak with crest factor 4
NOMINAL IMPEDANCE	8 ohm
DISPERSION	Dispersion: 90°–110° (horizontal) \times 50° (vertical)
	User-rotatable Differential Dispersion horn
CROSSOVER	3 kHz passive
ENCLOSURE	Symmetrical multi-angle plywood
FINISH	Black textured paint
PROTECTIVE GRILLE	Black perforated steel grille with scrim cloth backing
CONNECTORS	2 x NL4 connectors
PIN CONNECTIONS (INPUT)	1+/1–
PIN CONNECTIONS (LINK)	1+/1– to 1+/1–
FITTINGS	15 x M8 inserts, 6 x M8 inserts for wall bracket
	1 x bar handle with recycled ABS pocket
	Pole-mount socket with removable cover
DIMENSIONS	(W) 300 mm x (H) 545 mm x (D) 310 mm
	(W) 11.8 in x (H) 21.5 in x (D) 12.2 in
WEIGHT	15.3 kg (33.7 lbs)
ACCESSORIES (OPTIONAL)	Wall bracket WB10/12
	M8 eye bolt HTKCT05, yoke, transit cover

Q12

TYPE	Compact, passive two-way loudspeaker
FREQUENCY RESPONSE [1]	56 Hz – 17 kHz \pm 3 dB, -10 db @ 45 Hz
DRIVER (LF)	12" (300 mm) with 2.5" (63 mm) voice coil, ferrite motor system
DRIVER (HF)	1" (25 mm) exit compression driver with 1.7" (43 mm) voice coil
RATED POWER [2]	300 W AES, 1200 W peak
REQUIRED ELECTRONICS	Processor and amplifier, or a combined amplifier-processor unit
RECOMMENDED ELECTRONICS	DX0.4, DX0.6 or DX4.0 system processor and VIA amplifier, or iKON amplifier-processor
SENSITIVITY [3]	96.5 dB
MAXIMUM SPL [3]	121 dB continuous, 127 dB peak, 133 dB peak with crest factor 4
NOMINAL IMPEDANCE	8 ohm
DISPERSION	Dispersion: 90°–110° (horizontal) \times 50° (vertical)
	User-rotatable Differential Dispersion horn
CROSSOVER	2.7 kHz passive
ENCLOSURE	Symmetrical multi-angle plywood
FINISH	Black textured paint
PROTECTIVE GRILLE	Black perforated steel grille with scrim cloth backing
CONNECTORS	2 x NL4 connectors
PIN CONNECTIONS (INPUT)	1+/1–
PIN CONNECTIONS (LINK)	1+/1– to 1+/1–
FITTINGS	16 x M8 inserts, 6 x M8 inserts for wall bracket
	1 x bar handle with recycled ABS pocket
	Pole-mount socket with removable cover
DIMENSIONS	(W) 358 mm x (H) 600 mm x (D) 321 mm
	(W) 14.1 in x (H) 23.6 in x (D) 12.7 in
WEIGHT	18.4 kg (40.6 lbs)
ACCESSORIES (OPTIONAL)	Wall bracket WB10/12
	M8 eye bolt HTKCT05, yoke, transit cover

Q15

TYPE	Passive two-way loudspeaker
FREQUENCY RESPONSE [1]	56 Hz – 17 kHz \pm 3 dB, -10 db @ 45 Hz
DRIVER (LF)	15" (380 mm) with 4" (100 mm) voice coil, ferrite motor system
DRIVER (HF)	1.4" (35 mm) exit compression driver with 3" (75 mm) voice coil
RATED POWER [2]	800 W AES, 3200 W peak
REQUIRED ELECTRONICS	Processor and amplifier, or a combined amplifier-processor unit
RECOMMENDED ELECTRONICS	DX0.4, DX0.6 or DX4.0 system processor and VIA amplifier, or iKON amplifier-processor
SENSITIVITY [3]	98 dB
MAXIMUM SPL [3]	127 dB continuous, 133 dB peak, 139 dB peak with crest factor 4
NOMINAL IMPEDANCE	8 ohm
DISPERSION	Dispersion: 70°–90° (horizontal) \times 50° (vertical)
	User-rotatable Differential Dispersion horn
CROSSOVER	1.5 kHz passive
ENCLOSURE	Symmetrical multi-angle plywood
FINISH	Black textured paint
PROTECTIVE GRILLE	Black perforated steel grille with scrim cloth backing
CONNECTORS	2 x NL4 connectors
PIN CONNECTIONS (INPUT)	1+/1–
PIN CONNECTIONS (LINK)	1+/1– to 1+/1–
FITTINGS	18 x M8 inserts, 6 x M8 inserts for wall bracket
	2 x pocket handles made from recycled ABS
	Pole-mount socket with removable cover
DIMENSIONS	(W) 420 mm x (H) 695 mm x (D) 400 mm
	(W) 16.5 in x (H) 27.4 in x (D) 15.8 in
WEIGHT	33.8 kg (74.6 lbs)
ACCESSORIES (OPTIONAL)	Wall bracket WB15
	M8 eye bolt HTKCT05, yoke, transit cover

Q44

TYPE	Passive two-way compact column loudspeaker
FREQUENCY RESPONSE [1]	82 Hz – 17 kHz ± 3 dB, -10 db @ 63 Hz
DRIVER (LF)	Four 4" (100 mm) with 1" (25 mm) voice coil, ferrite motor system
DRIVER (HF)	1" (25 mm) exit compression driver with 1" (25 mm) voice coil, PETP dome
RATED POWER [2]	200 W AES, 800 W peak
REQUIRED ELECTRONICS	Processor and amplifier, or a combined amplifier-processor unit
RECOMMENDED ELECTRONICS	DX0.4, DX0.6 or DX4.0 system processor and VIA amplifier, or iKON amplifier-processor
SENSITIVITY [3]	90 dB
MAXIMUM SPL [3]	113 dB continuous, 119 dB peak, 125 dB peak with crest factor 4
NOMINAL IMPEDANCE	8 ohm
DISPERSION	Dispersion: 100°–120° (horizontal) × 40° (vertical)
CROSSOVER	2.4 kHz passive
ENCLOSURE	Durable plywood
FINISH	Black or white textured paint
PROTECTIVE GRILLE	Black or white perforated steel grille with scrim cloth backing
CONNECTORS	1 x NL4 connector
PIN CONNECTIONS (INPUT)	1+/1–
PIN CONNECTIONS (LINK)	NA
FITTINGS	3 x M8 inserts, 1 x M6 insert, 4 x M6 inserts for wall bracket
	1 x pocket handle made from recycled ABS
	Pole-mount socket with removable cover
DIMENSIONS	(W) 150 mm x (H) 800 mm x (D) 187 mm (W) 5.9 in x (H) 31.5 in x (D) 7.3 in
WEIGHT	7.5 kg (16.5 lbs)
ACCESSORIES (OPTIONAL)	Wall bracket W6/8 M8 eye bolt HTKCT05, yoke, transit cover

Q26

TYPE	Passive two-way compact column loudspeaker
FREQUENCY RESPONSE [1]	69 Hz – 17 kHz ± 3 dB, -10 db @ 53 Hz
DRIVER (LF)	Dual 6" (150 mm) with 1.5" (38 mm) voice coil, ferrite motor system
DRIVER (HF)	1" (25 mm) exit compression driver with 1" (25 mm) voice coil, PETP dome
RATED POWER [2]	300 W AES, 1200 W peak
REQUIRED ELECTRONICS	Processor and amplifier, or a combined amplifier-processor unit
RECOMMENDED ELECTRONICS	DX0.4, DX0.6 or DX4.0 system processor and VIA amplifier, or iKON amplifier-processor
SENSITIVITY [3]	94 dB
MAXIMUM SPL [3]	119 dB continuous, 125 dB peak, 131 dB peak with crest factor 4
NOMINAL IMPEDANCE	8 ohm
DISPERSION	Dispersion: 100°–120° (horizontal) × 40° (vertical)
CROSSOVER	1.5 kHz passive
ENCLOSURE	Durable plywood
FINISH	Black or white textured paint
PROTECTIVE GRILLE	Black or white perforated steel grille with scrim cloth backing
CONNECTORS	1 x NL4 connector
PIN CONNECTIONS (INPUT)	1+/1–
PIN CONNECTIONS (LINK)	NA
FITTINGS	3 x M8 inserts, 1 x M6 insert, 4 x M6 inserts for wall bracket
	1 x pocket handle made from recycled ABS
	Pole-mount socket with removable cover
DIMENSIONS	(W) 193 mm x (H) 670 mm x (D) 218 mm (W) 7.6 in x (H) 26.4 in x (D) 8.6 in
WEIGHT	9.5 kg (20.9 lbs)
ACCESSORIES (OPTIONAL)	Wall bracket W6/8 M8 eye bolt HTKCT05, yoke, transit cover

Q210

TYPE	Slimline, dual 10" driver subwoofer
FREQUENCY RESPONSE (4PI) [1]	49 Hz – 100 Hz ± 3 dB, -10 db @ 41 Hz
DRIVER	10" (250 mm) with 2" (50 mm) long excursion voice coil, ferrite motor system
RATED POWER [2]	200 W AES, 800 W peak
REQUIRED ELECTRONICS	Processor and amplifier, or a combined amplifier-processor unit
RECOMMENDED ELECTRONICS	DX0.4, DX0.6 or DX4.0 system processor and VIA amplifier, or iKON amplifier-processor
SENSITIVITY [4]	98 dB
MAXIMUM SPL [4]	118 dB continuous, 124 dB peak, 130 dB peak with crest factor 4
NOMINAL IMPEDANCE	4 ohm
DISPERSION	Omnidirectional
ENCLOSURE	Durable plywood
FINISH	Black textured paint
PROTECTIVE GRILLE	Black perforated steel grille with scrim cloth backing
CONNECTORS	3 x NL4 connectors: 2 at bottom rear (input and link A), 1 at top rear (link B)
PIN CONNECTIONS (INPUT)	1+/1–
PIN CONNECTIONS (LINK A)	1+/1– to 1+/1– and 2+/2– to 2+/2–
PIN CONNECTIONS (LINK B)	1+/1– on input to 2+/2– on link B
FITTINGS	16 x M8 inserts: 2 on top, 2 on bottom, 4 on left, 4 on right, 4 on rear
	2 x bar handles with recycled ABS pockets: 1 at rear top, 1 at rear bottom
	M20 top-mounted thread plate for pole mounting
	4 x skids on base
	4 x skids on right side, 4 x recesses on left side: for stacking horizontally
DIMENSIONS	(W) 296 mm x (H) 718 mm x (D) 462 mm (W) 11.7 in x (H) 28.3 in x (D) 18.2 in
WEIGHT	22.4 kg (49.4 lbs)
ACCESSORIES (OPTIONAL)	M8 eye bolt HTKCT05, Wind-up telescopic pole ASF20071, transit cover

Q118

TYPE	Compact, high-performance 18" subwoofer
FREQUENCY RESPONSE (4PI) [1]	38 Hz – 100 Hz ± 3 dB, -10 db @ 31 Hz
DRIVER	18" (460 mm) with 4" (100 mm) long excursion voice coil, ferrite motor system
RATED POWER [2]	800 W AES, 3200 W peak
REQUIRED ELECTRONICS	Processor and amplifier, or a combined amplifier-processor unit
RECOMMENDED ELECTRONICS	DX0.4, DX0.6 or DX4.0 system processor and VIA amplifier, or iKON amplifier-processor
SENSITIVITY [4]	95 dB
MAXIMUM SPL [4]	124 dB continuous, 130 dB peak, 136 dB peak with crest factor 4
NOMINAL IMPEDANCE	8 ohm
DISPERSION	Omnidirectional
ENCLOSURE	Durable plywood
FINISH	Black textured paint
PROTECTIVE GRILLE	Black perforated steel grille with scrim cloth backing
CONNECTORS	3 x NL4 connectors: 2 at bottom rear (input and link A), 1 at top rear (link B)
PIN CONNECTIONS (INPUT)	1+/1–
PIN CONNECTIONS (LINK A)	1+/1– to 1+/1– and 2+/2– to 2+/2–
PIN CONNECTIONS (LINK B)	1+/1– on input to 2+/2– on link B
FITTINGS	16 x M10 inserts: 2 on top, 2 on bottom, 4 on left, 4 on right, 4 on rear
	16 x M8 inserts on rear for optional castors
	2 x bar handles with recycled ABS pockets: 1 on each side
	M20 top-mounted thread plate for pole mounting
	4 x skids on base, 4 x recesses on top: for stacking vertically
DIMENSIONS	(W) 530 mm x (H) 606 mm x (D) 690 mm (W) 20.9 in x (H) 23.9 in x (D) 27.2 in
WEIGHT	45.5 kg (100.3 lbs)
ACCESSORIES (OPTIONAL)	M10 eye bolt HTKCT06, transit cover Wind-up telescopic pole ASF20071. Set of four castors WHEELKIT.

Q218

High-performance, dual 18" driver subwoofer
38 Hz – 100 Hz ± 3 dB, -10 db @ 31 Hz
2 x 18" (460 mm) with 4" (100 mm) long excursion voice coil, ferrite motor system
1600 W AES, 6400 W peak
Processor and amplifier, or a combined amplifier-processor unit
DX0.4, DX0.6 or DX4.0 system processor and VIA amplifier, or iKON amplifier-processor
101 dB
130 dB continuous, 136 dB peak, 142 dB peak with crest factor 4
4 ohm
Omnidirectional
Durable plywood
Black textured paint
Black perforated steel grille with scrim cloth backing
3 x NL4 connectors: 2 at bottom rear (input and link A), 1 at top rear (link B)
1+/1–
1+/1– to 1+/1– and 2+/2– to 2+/2–
1+/1– on input to 2+/2– on link B
24 x M10 inserts: 4 on top, 4 on bottom, 6 on left, 6 on right, 4 on rear
16 x M8 inserts on rear for optional castors
4 x bar handles with recycled ABS pockets: 2 on top, 2 on bottom
M20 top-mounted thread plate for pole mounting
4 x skids on base: for standing vertically
4 x skids on right side, 4 x recesses on left side: for stacking horizontally
(W) 536 mm x (H) 1206 mm x (D) 690 mm
(W) 21.1 in x (H) 47.5 in x (D) 27.2 in
82.5 kg (181.9 lbs)
M10 eye bolt HTKCT06, transit cover
Wind-up telescopic pole ASF20071. Set of four castors WHEELKIT.

Notes

- [1] On-axis at 1 meter in open (4pi) space.
- [2] AES 2-1984 (r2003) using band-limited IEC-60268 weighted pink noise.
- [3] 2.83 V at 1 meter in open (4pi) space, measured in the 2pi (baffle) region.
- [4] 2.83 V at 1 meter in open (4pi) space.

INTELLIGENCE IN EVERY APPLICATION



Martin Audio Limited

Century Point

Halifax Road

Cressex Business Park

High Wycombe

Buckinghamshire

HP12 3SL

England

FOR SALES ENQUIRIES:

UK

Telephone: +44 (0)1494 535312

E-mail: info@martin-audio.com

NORTH AMERICA

Telephone: 323 381 5310

All information is Copyright © 2025 Martin Audio Ltd.

Martin Audio, the Martin Audio logo and Hybrid are registered trademarks of Martin Audio Ltd. in the United Kingdom, United States and other countries; all other Martin Audio trademarks are the property of Martin Audio Ltd.

www.martin-audio.com



Unite Your Audience
The Martin Audio Experience

Version 1.0